

# TRAVEL COMMmode

## Key Features:

- High grade anodised aluminum frame
- Flip-over armrests for easy transfers
- Handmade fully padded memory foam seat w/ desired cut-out/bite
- Quick drying canvas backrest
- Side frame cutaways
- Self Propelled wheels and quick-release axles
- Durable and easy to clean design
- Front braking medical grade casters
- Flip-up footplate with adjustable height
- Clearance for positioning over toilet
- Snap on rear attendant castors
- Simple setup & pack-down
- Durable canvas wheelie bag

## Specifications:

- \* *Weight: 14kg (In Bag)*
- \* *Weight limit: 100kg*
- \* *Overall Dimensions: 28.5 x 24.5 x 38" (Standard LxWxH)*
- \* *Custom wheel size (standard 20 or 22")*
- \* *Custom: seat width (standard - 18")*
- \* *Custom seat height (standard - 20")*
- \* *Custom seat length (standard - 16")*
- \* *Custom seat rake (standard 1/2")*
- \* *Custom back angle (4 deg standard)*

## Optional Extras:

- \* *Backrest: Canvas (standard) or tension adjustable*
- \* *Seat Padding: 1/2 or full gel overlay*
- \* *Footplate: Center mount flip up (standard), dual swing away or drop in.*
- \* *Brakes: Composite scissor lock.*
- \* *Armrests: Swing over (standard)*
- \* *Light-weight travel bedpan & carrier*



# COMMUNE PRODUCTS

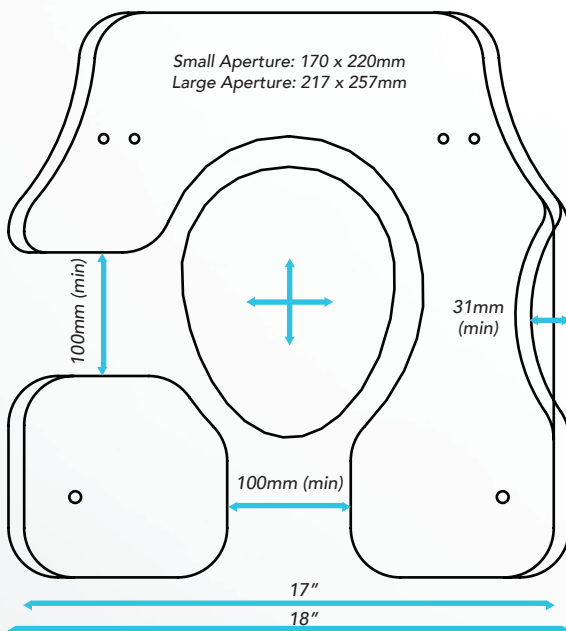
## TUKI Bedpans & Carriers

- \* Bedpan Options available for all TUKI Commodes including a portable option for our travel commode
- \* Frame cutaways to suit seat cutouts/bites.



## TUKI COMMUNE SEATS

- Standard Seat
- Left/Right/Front Cutouts
- Left & Right/Front Bites
  - \* Two Aperture sizes (small & std)
  - \* Custom seat widths/lengths
  - \* Fully padded memory foam
  - \* Half & Full gel overlay options for added comfort
  - \* Durable anti-bacterial upholstery
  - \* Hand made in New Zealand





## Armrests:

- Gutter Pads
- Extended Pads
- Foam Wrap Pads
- Waterfall Pads
  - \* *Swing-over, Tee Style (Drop in) and Heavy Duty styles available*
  - \* *Made from high grade brushed stainless steel or anodised aluminum resistant to corrosion from water and soap scum*



## Foot-plates:

- Flip Up
- Swing Away Paddles (Drop In)
- Drop in one piece cage
  - \* *Custom footplate padding options available*
  - \* *Made from high grade brushed stainless steel, anodised aluminum and acetate. Resistant to corrosion from water and soap scum*



## Brakes:

- Push to lock (Durable Aluminum construction)
- Pin Lock
- Light-weight composite brakes (Scissor lock brakes)



# COMMODOE PRODUCTS



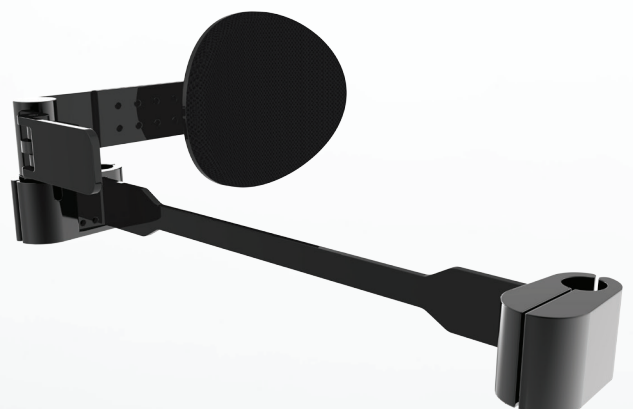
## Backrests

- Light-weight canvas backrest (standard with all Tuki Commodes)
  - Tension Adjustable Padded Backrest
  - Hardshell Padded backrest
- \* All padded backrests feature medical grade memory foam
- \* Made from corrosion resistant powder-coated aluminum and anti-bacterial fabrics.



## Laterals & Guides

- Swing Away Lateral Support
- Swing Away lateral Support Heavy Duty
- Thigh Guide



## Wheels & Casters

- Snap on attendant casters
  - \* Quick release axle fitting
  - \* Simple to swap out your self propelled commode wheels for attendant casters when space is tight.
  - \* Durable anodised aluminum and stainless steel construction with medical grade castor wheels
- Rear Self Propelled Spinergy Wheels
  - \* Various sizes (20 & 22" STD)
  - \* Puncture free tires
  - \* ABS bearings to prevent deterioration
- Fixed attendant castors
  - \* If self propelled wheels aren't required your commode can be custom fitted with fixed braking attendant castors



### Notes: